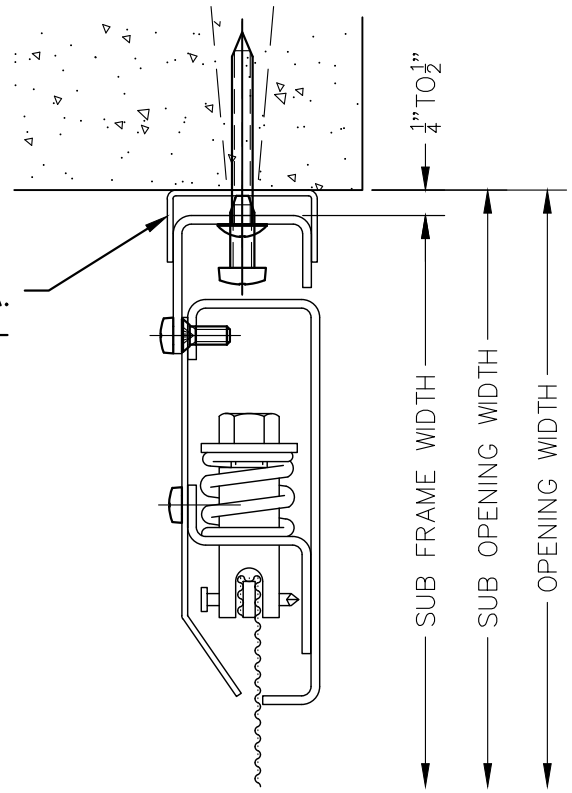


$\frac{3}{4}$ " X $1\frac{9}{16}$ " X $\frac{3}{4}$ " X 16 GA.
STEEL SCRIBE CHANNEL



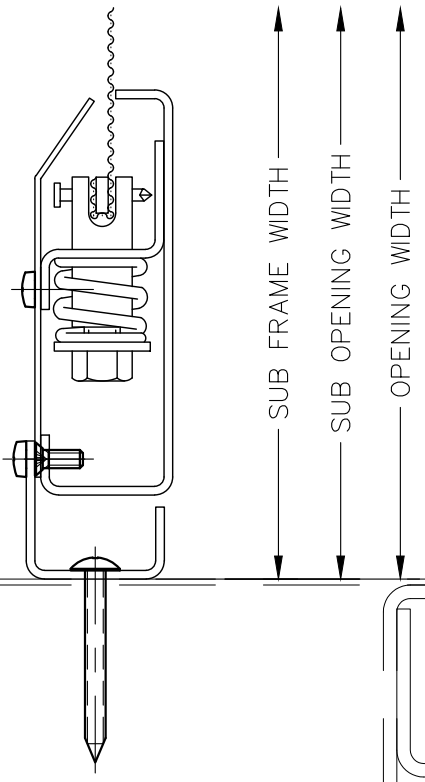
1" TO $1\frac{1}{2}$ "

SUB FRAME WIDTH

SUB OPENING WIDTH

OPENING WIDTH

1 HEAD DETAIL
Scale: 6"=1'-0"



SUB FRAME WIDTH

SUB OPENING WIDTH

OPENING WIDTH

2 SILL DETAIL
Scale: 6"=1'-0"

REVISION LOG	REV	BY	DATE	DESCRIPTION

KANE INNOVATIONS
GUARDIANS OF SAFE ENVIRONMENTS

KANE DETENTION
PROTECTION BY NAME

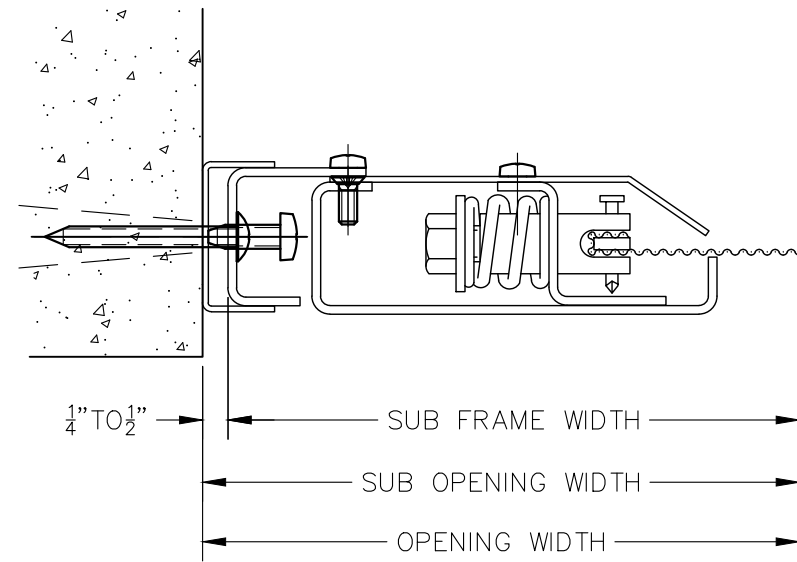
EBERLE, PENNSYLVANIA 16808
PH#: 800-773-2439
www.kaneinnovations.com

© 2021

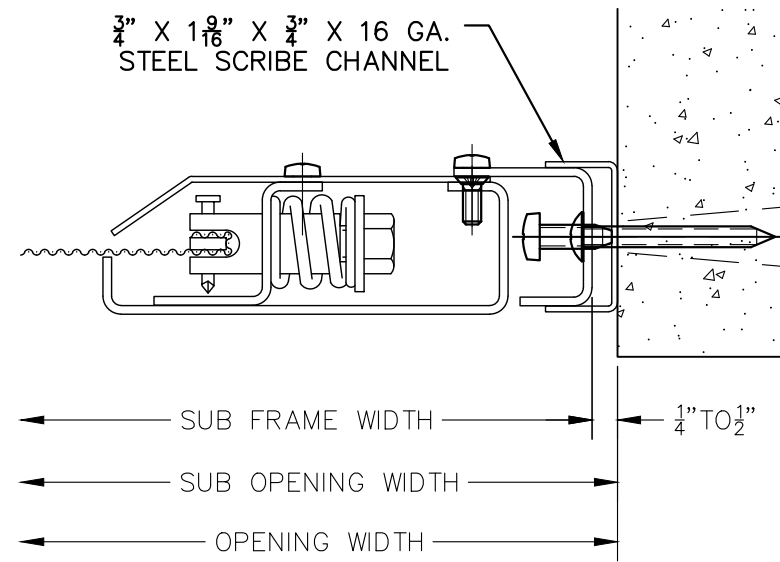
S-DEN-I
STEEL DEFENDER INTERVIEW SCREEN
REVEAL MOUNT

PROJECT	PROJECT NO.
DRAWN	DATE
SCALE	6"=1'-0"
SHEET	D1

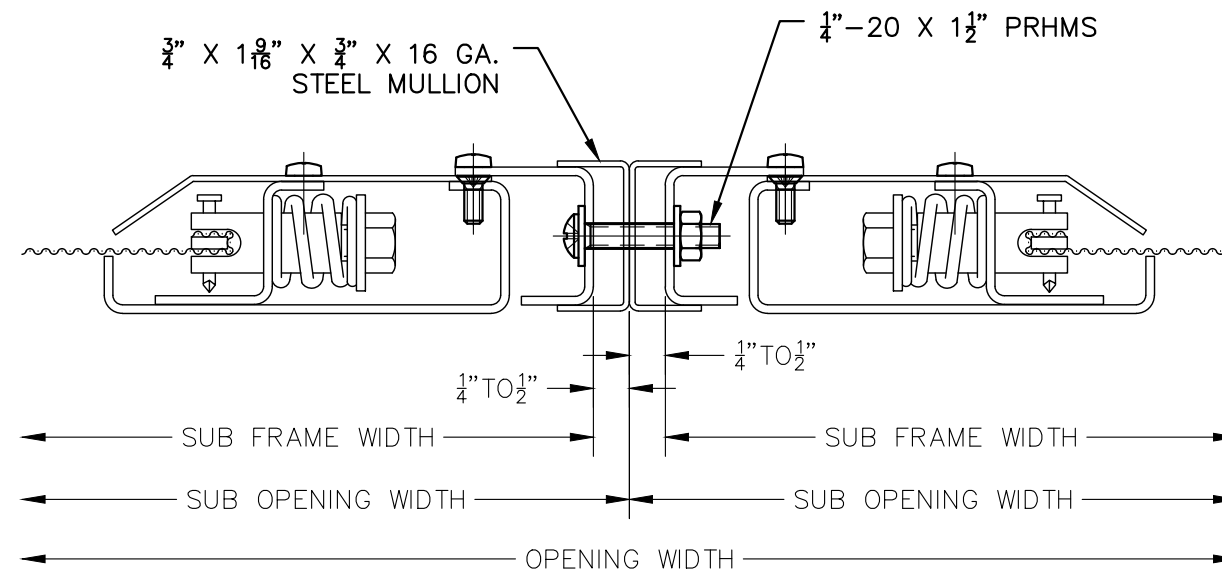
INFORMATION SHOWN ON THIS DRAWING IS PROPRIETARY AND THE SOLE PROPERTY OF KANE INNOVATIONS CORPORATION AND IS NOT TO BE REPRODUCED, DISCLOSED, OR TRANSMITTED TO OTHERS FOR ANY PURPOSE NOT AUTHORIZED BY KANE INNOVATIONS CORPORATION.



3 LEFT JAMB
Scale: 6"=1'-0"



4 RIGHT JAMB
Scale: 6"=1'-0"



5 MULLION DETAIL
Scale: 6"=1'-0"

REV	BY	DATE	DESCRIPTION

REVISION LOG

KANE INNOVATIONS
GUARDIANS OF SAFE ENVIRONMENTS
KANE DETENTION FACILITY BY NAME
EBERLE, PENNSYLVANIA 16808
PH#: 800-773-2439
www.kaneinnovations.com

© 2021

PROJECT
S-DEN-I
STEEL DEFENDER INTERVIEW SCREEN

PROJECT NO.

DRAWN DATE
05/01/2014

SCALE
6"=1'-0"

SHEET
D2

REVEAL MOUNT

INFORMATION SHOWN ON THIS DRAWING IS PROPRIETARY AND THE SOLE PROPERTY OF KANE INNOVATIONS CORPORATION AND IS NOT TO BE REPRODUCED, DISCLOSED, OR TRANSMITTED TO OTHERS FOR ANY PURPOSE NOT AUTHORIZED BY KANE INNOVATIONS CORPORATION.