

ELEVATION 1

MARK: (SURFACE MOUNTED)
 (1) EXTERIOR OPENING THUS
 (3) A-VNG-P3G-Z SCREENS REQUIRED
 FIXED ALUMINUM VANGUARD SECURITY SCREENS
 INFILL: 14 GAUGE GALVANNEALED PERFORATED STEEL PLATE
 LOCK TYPE: NONE - FIXED SCREENS
 PRIMARY FINISH: ONE OF KANE'S STANDARD COLORS - ADVISE!
 INFILL FINISH: STANDARD BLACK

NOTE:
 ALL SCREENS 48" & TALLER
 REQUIRE A BRACE. PLEASE
 ADVISE BRACE HEIGHT.

REV	BY	DATE	DESCRIPTION

REVISION LOG

KANE INNOVATIONS
 GUARDIANS OF SAFE ENVIRONMENTS
 KANE SECURITY
 SERVING BY NAME

© 2021

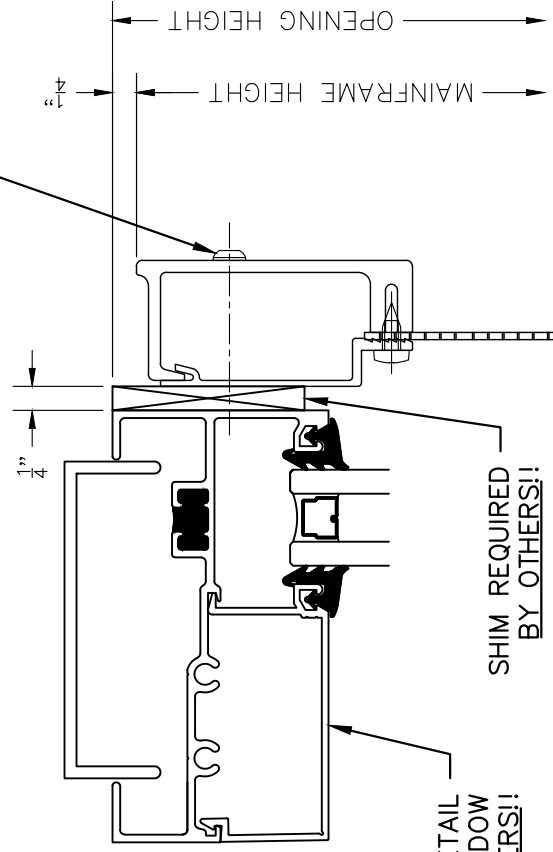
INFORMATION SHOWN ON THIS DRAWING IS PROPRIETARY AND THE SOLE PROPERTY OF KANE INNOVATIONS CORPORATION, AND IS NOT TO BE REPRODUCED, DISCLOSED, OR TRANSMITTED TO OTHERS FOR ANY PURPOSE NOT AUTHORIZED BY KANE INNOVATIONS CORPORATION.

PHILADELPHIA, PA 19106
 PH: 800-773-2439
 WWW.KANEINNOVATIONS.COM

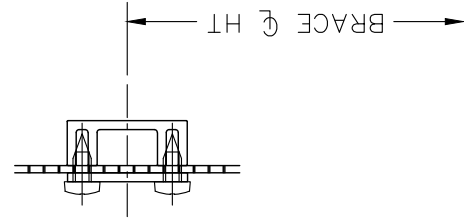
PROJECT	LAUSD
PROJECT NO.	
DRAWN	ISS
DATE	01/29/2016
SCALE	3/4" = 1' - 0"
SHEET	E1

FIXED ALUMINUM VANGUARD
SURFACE MOUNTED
14 GA. GALV. PERF. PLATE 51% OPEN AREA

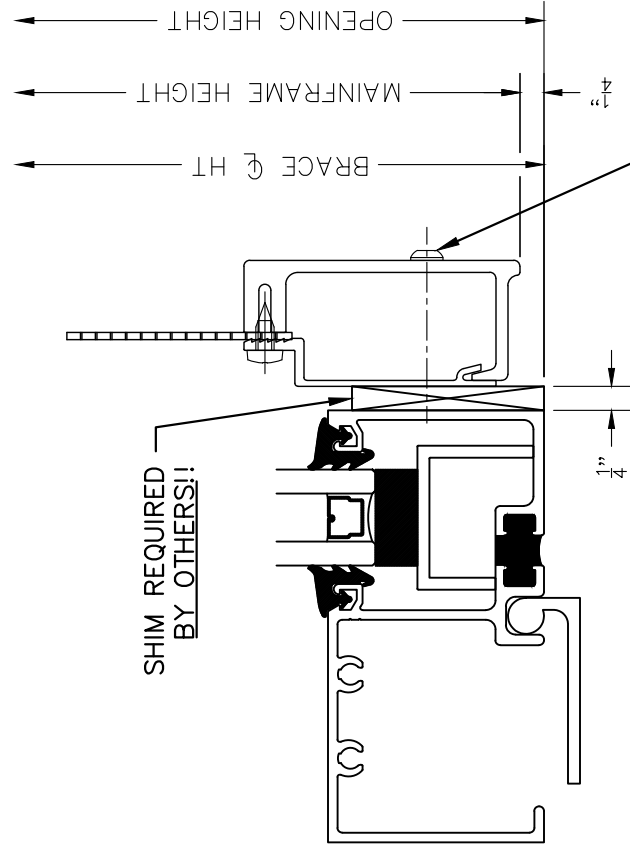
INSTALLATION FASTENERS, SEE
 SPECS FOR RECOMMENDATIONS
 (NOT SUPPLIED BY KANE!)



1 HEAD
 HALF SCALE



6 BRACE
 HALF SCALE



2 SILL
 HALF SCALE

PROJECT

PROJECT NO.

LAUSD

DRAWN
 ISS

DATE
 01/29/2016

SCALE

HALF SCALE

SHEET

D1

© 2021

KANE INNOVATIONS
FIXED ALUMINUM VANGUARD
SURFACE MOUNTED

KANE INNOVATIONS
 GUARDIANS OF SAFE ENVIRONMENTS
 KANE SECURITY
 SERVING BY KANE
 16506
 PH# 800-773-2439
 www.kaneinnovations.com

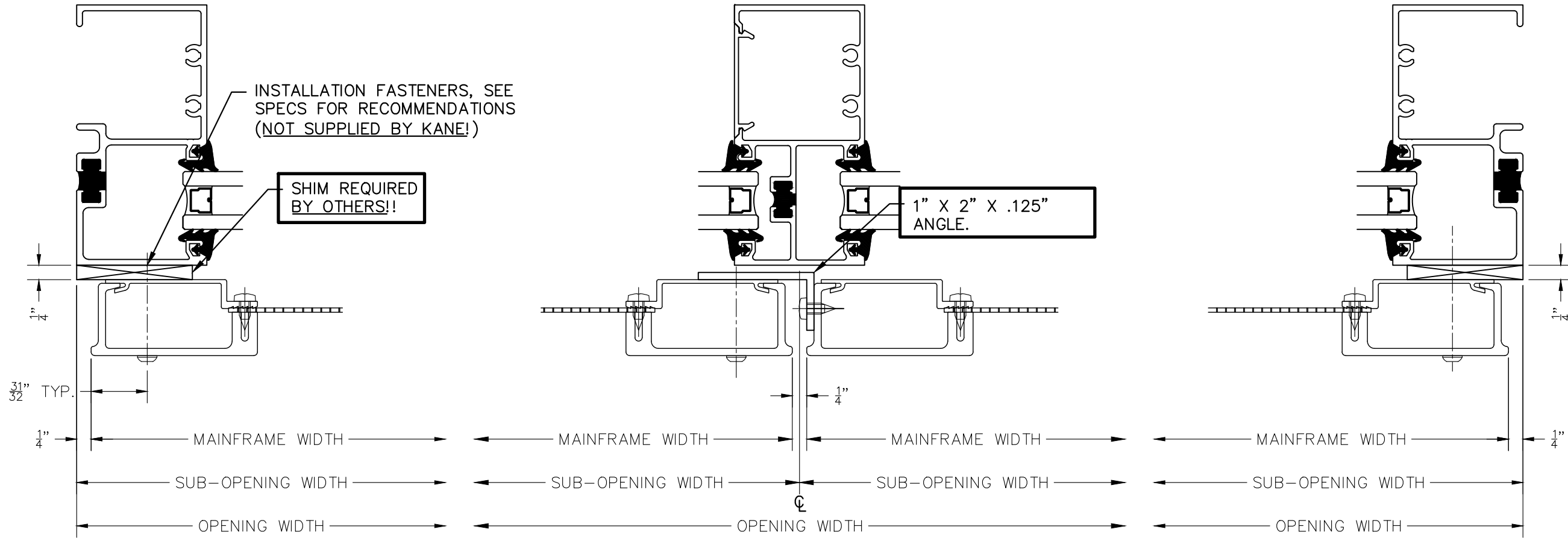
REVISION LOG

REV	BY	DATE	DESCRIPTION

INFORMATION SHOWN ON THIS DRAWING IS PROPRIETARY AND THE SOLE PROPERTY OF KANE INNOVATIONS CORPORATION, AND IS NOT TO BE REPRODUCED, DISCLOSED, OR TRANSMITTED TO OTHERS FOR ANY PURPOSE NOT AUTHORIZED BY KANE INNOVATIONS CORPORATION.

INTERIOR

INTERIOR



3 LEFT JAMB
HALF SCALE

5 H-MULLION
HALF SCALE

4 RIGHT JAMB
HALF SCALE

EXTERIOR

EXTERIOR

NOTE:
FIELD VERIFY THAT
THERE IS ADEQUATE
CLEARANCE FOR
THE ANGLE AT THE
MULLION

REV.	BY	DATE	DESCRIPTION

KANE INNOVATIONS
 GUARDIANS OF SAFE ENVIRONMENTS
 KANE SECURITY
 SERVING BY KANE

INFORMATION SHOWN ON THIS DRAWING IS PROPRIETARY AND THE SOLE PROPERTY OF KANE INNOVATIONS CORPORATION, AND IS NOT TO BE REPRODUCED, DISCLOSED, OR TRANSMITTED TO OTHERS FOR ANY PURPOSE NOT AUTHORIZED BY KANE INNOVATIONS CORPORATION.

PH#: 800-773-2439
 WWW.KANEINNOVATIONS.COM

© 2021

PROJECT
FIXED ALUMINUM VANGUARD
 SURFACE MOUNTED

PROJECT NO.
LAUSD

14 GA. GALV. PERF. PLATE 51% OPEN AREA

DRAWN	DATE
ISS	01/29/2016
SCALE	
HALF SCALE	
SHEET	
D2	

LEVEL 6

Fixed

Aluminum Van-Guard® Security Screen

Model: A-VNG-Z

PART 1 GENERAL

1.01 Description

The security screens shown on the plans and herein specified are the products of Kane Innovations, Erie, Pennsylvania. This manufacturer's name and products have been used to establish the standards of construction and quality of workmanship required for this project. Manufacturers bidding on this project must be actively engaged in the fabrication of specified items for a minimum of five (5) years prior to the bid date. Manufacturers requesting approval to bid their products as equal must submit to the Architect full-size drawings, including details of construction, and a complete operating security screen sample, ten (10) days prior to the bid date.

1.02 Submittals

- Manufacturer shall submit shop drawings, showing details of attachment to surround materials and elevations showing scope of the project.
- Samples of materials may be requested without cost to owner: frame sections, infill sections, fasteners, mullion section, corner section, etc.

1.03 Warranty

The operation of the security screen supplied by Kane Innovations on the designated project is warranted for one (1) year against any proven defective material or parts, as called for in the specifications and approved shop drawings. This warranty does not cover abuse by others.

PART 2 PRODUCTS

2.01 Acceptable Manufacturers

Kane Innovations, Erie, PA
☎ (800) 773-2439

2.02 Main Frame

- The main frame shall be of channel design measuring 1.25"[31.75mm] x 2.875"[73.025mm] x 0.75"[19.05mm], extruded from 6063-T6-aluminum alloy. Weight shall be not less than .927 lbs./ft., with a nominal thickness of .125-inch. The corners of the main frame shall be mitered and internally robotically welded.
- A removable interlocking concealment cover (Z-shaped) measuring 2.094"[53.181] x 0.50"[12.70] x 0.625"[15.875], extruded from 6063-T6 aluminum alloy, .062-inch thick, .290 lbs./ft., shall be attached to the main frame using TORX® tamper-resistant screws. Braces shall be furnished when required.

2.03 Finish

- The aluminum shall be thoroughly cleaned in a 5-step bonderizing process. An electrostatically applied thermoplastic, polyester powder coating (2.5 mil min. thickness) which shall be applied and baked to a hard mar-resistant finish in one of Kane's standard colors.
 - White
 - Gray
 - Black
 - Beige
 - Dark Bronze
 - ~~Custom colors are available at additional cost with submission of color sample.~~
- Anodized finish options:
 - ~~Clear anodize (215-R1)~~

2.04 Wire Cloth

- ~~Wire cloth shall be woven 12-mesh to the inch from .020-inch diameter Type 304 stainless steel wire and double crimped.~~
- ~~Wire cloth shall be woven 10-mesh to the inch from .047-inch diameter Type 304 stainless steel wire and double crimped.~~

Perforated Panel

- ~~18-gauge stainless steel with 63% open area~~
- ~~16-gauge mill-galvannealed steel with 63% open area~~
- 14-gauge mill-galvannealed steel with 51% open area
- ~~12-gauge mill-galvannealed steel with 51% open area~~

2.05 Infill Attachment

- The wire cloth shall be folded 90 degrees and held securely in place by means of a removable interlocking concealment plate and TORX® tamper-resistant screws.
- The perforated panel shall lie flat on the main frame and be held in place by means of a removable interlocking concealment plate and TORX® tamper-resistant screws.
- TORX® tamper-resistant screws shall penetrate the removable interlocking concealment plate, wire cloth and main frame approximately 4" [101.6] on center.

2.06 Hardware

- Each screen shall include .125-inch thick aluminum back-up angles. The 1" [25.40] x 2" [50.80] angles shall be supplied at the head and jams if required.
- Each screen shall come fully assembled and tested at the factory for operation.

PART 3 EXECUTION

3.01 Inspection

Verify that openings fit allowable tolerances, are plumb, level, provide a solid anchoring surface and comply with approved shop drawings.

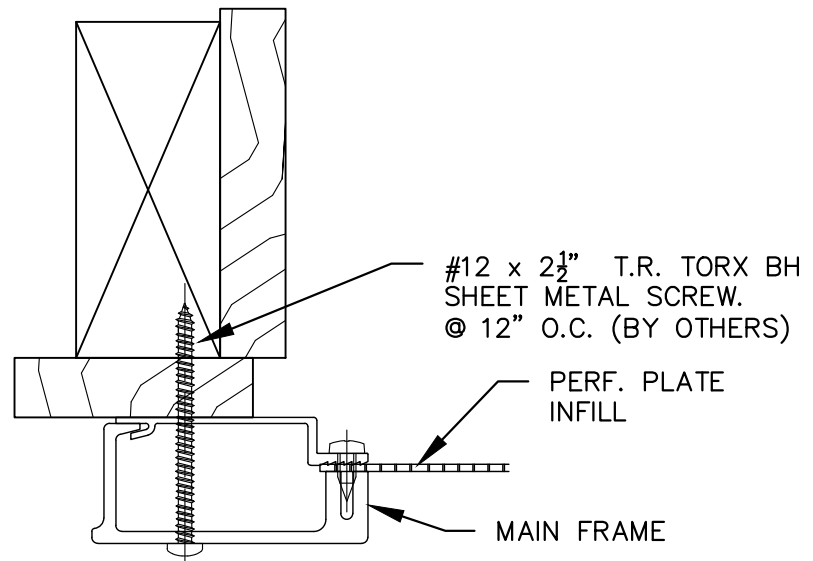
3.02 Installation

- Install in accordance with approved shop drawings and specifications.
- Plumb and align faces in a single plane and erect screens square and true, adequately anchored to structure.
- After completion of installation, screens shall be adjusted and cleaned.

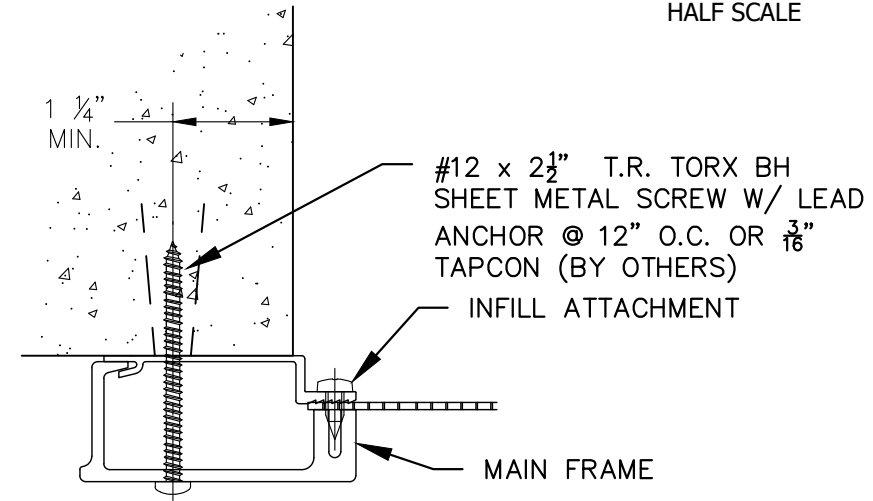
PART 4 ENVIRONMENTAL REPORTING

4.01 LEED Materials and Resources

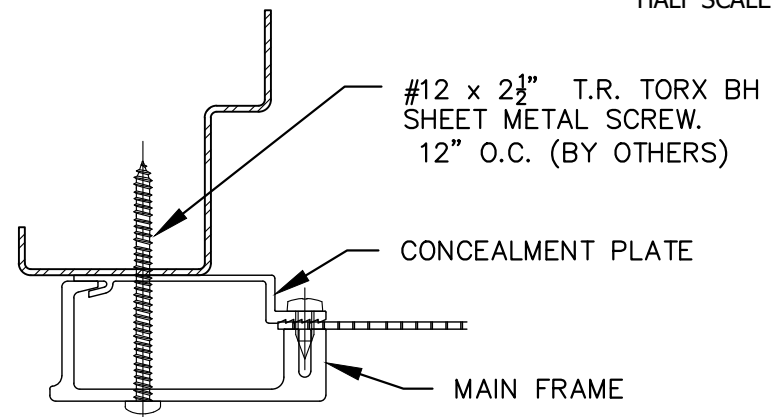
- Recycled Content: This product contributes toward satisfying Credit 4 under LEED.
- Regional Material: This product can contribute toward satisfying Credit 5 under LEED.



1 MOUNTING TO WOOD SURROUND
HALF SCALE



2 MOUNTING TO MASONRY SURROUND
HALF SCALE



3 MOUNTING TO METAL SURROUND
HALF SCALE

REV.	BY	DATE	DESCRIPTION

KANE INNOVATIONS
 GUARDIANS OF SAFE ENVIRONMENTS
 888 PENNSYLVANIA 16106
 PH: 800-773-2439
 WWW.KANEINNOVATIONS.COM
KANE SECURITY
 AUTHORITY BY NAME

© 2021

FIXED ALUMINUM VANGUARD
SURFACE MOUNTED
14 GA. GALV. PERF. PLATE 51% OPEN AREA

PROJECT		LAUSD
PROJECT NO.		
DRAWN	DATE	01/29/2016
ISS		
SCALE		HALF SCALE
SHEET		S1