

**Kane Security: Screens by Kane.** At Kane Innovations, window safety has always been our primary concern, from initial concept to fabrication. But we also believe that secure window protection should have a pleasant appearance; blending flawlessly with the structure's exterior to align with the look of the built environment. That's why we continue to create window protection that mimics the look of cloth window screens, but is comprised entirely of robust metal components and infill options. We invite you to join the thousands of medical facilities, universities, colleges, public schools and public housing developments who have turned to Kane for over a half-century for attractive, safe and innovative window protection that endures over time.



2250 POWELL AVENUE  
ERIE, PA 16506  
800.773.2439  
[help@KaneInnovations.com](mailto:help@KaneInnovations.com)

[KaneInnovations.com](http://KaneInnovations.com)







## LEVEL 4: MEDIUM VANDALISM SECURITY SCREENS



OPERABLE TOP-HINGED ALUMINUM PROTECTOR – A-PRO-B  
PENN STATE UNIVERSITY  
STATE COLLEGE, PA



FIXED ALUMINUM PROTECTOR – A-PRO-Z  
MARYLAND INSTITUTE COLLEGE OF ART (BOOKSTORE)  
BALTIMORE, MD

## LEVEL 3: LIGHT VANDALISM SCREENS



LEVEL 3 VANDALISM SCREENS ARE ESSENTIAL TO DETERRING VANDALISM AND PREVENTING GLASS BREAKAGE. LEVEL 3 SCREENS PROTECT AGAINST THROWN DEBRIS, SUCH AS ROCKS AND BOTTLES.

FIXED ALUMINUM VANDAL SHIELD – A-VSR-Z

LEVEL 4  
CORNER SAMPLE



Level 4 Medium Vandalism Security Screens provide the same protection as Level 3 vandalism screens, with added security against break-ins using a tool or determined effort. Level 4 screens are available in fixed or operable options with emergency egress.





## LEVEL 5: HEAVY VANDALISM SECURITY SCREENS



OPERABLE SIDE- HINGED STEEL - S-NRS-O (INTERIOR MOUNTED NARROWLINE)  
MOORSETOWN HIGH SCHOOL  
MOORSETOWN, NJ



OPERABLE SIDE - HINGED  
STEEL NARROWLINE S-NRS-O  
BELL SCHOOL  
CHICAGO, IL

LEVEL 5  
CORNER SAMPLE



Level 5 Heavy Vandalism Security Screens resist forced entry and heavy, thrown objects. They're also SMA-certified as "HUD Heavy" and feature a high-strength main frame and sub-frame. Additional Level 5 features include heavy duty locking hardware and a single-point emergency release.





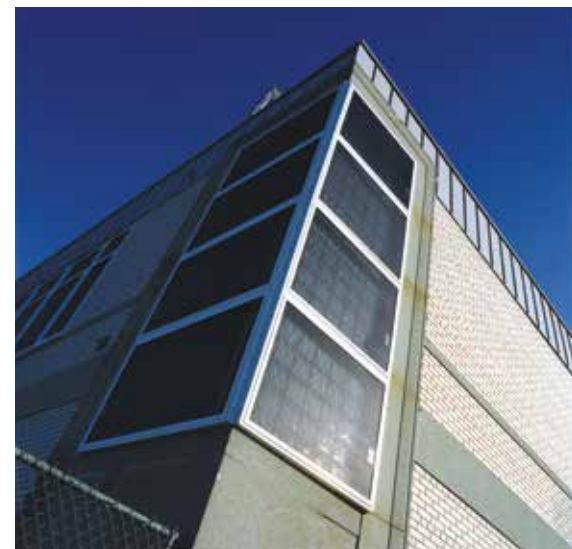
## LEVEL 6: MEDIUM SECURITY SCREENS



OPERABLE SIDE-HINGED ALUMINUM VANGUARD – A-VNG-O  
TUFTS UNIVERSITY  
MEDFORD, MA



OPERABLE SIDE-HINGED ALUMINUM VANGUARD – A-VNG-O  
MCKINLEY HIGH SCHOOL  
WASHINGTON, DC



LEVEL 6  
CORNER SAMPLE

OPERABLE SIDE-HINGED  
ALUMINUM VANGUARD – A-VNG-O  
DAVIS ELEMENTARY SCHOOL  
WASHINGTON, DC



Our Level 6 Medium Security Screens act as an escape deterrent while also protecting against forced entry and heavy vandalism. Features include a 12-gauge, steel main- and sub-frame, continuously welded corners, concealed detention hardware with a 107 Bitt Key lock, anti-compression hinges, and single-point emergency release.





Level 7 Maximum Security Screens are ideal for patient safety in **Behavioral Health** and **Veteran Affairs Hospitals**. They also function as escape deterrents in **Juvenile Residential Centers** and **Correctional Facilities**.

LEVEL 7:  
CORNER SAMPLE



OPERABLE SIDE-HINGED STEEL DEFENDER - S-DEN-O



## LEVEL 7: MAXIMUM SECURITY SCREENS



OPERABLE  
SIDE-HINGED  
STAINLESS STEEL  
DEFENDER - X-DEN-O

Level 7 Maximum Security Screens offer the same protection as Level 6 screens, but with increased resistance to extreme forces and repeated blows over long periods of time.

Level 7 screens include a 12-gauge steel main- and sub-frame, continuously welded corners, coil spring suspension for wire cloth infill, concealed detention hardware with a 107 Bitt Key lock, anti-compression hinges, and a single-point emergency release.



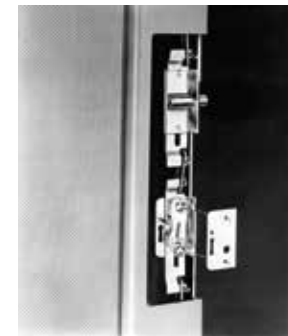


## UNLOCKING GREATER SECURITY



## Emergency Releases & Locks

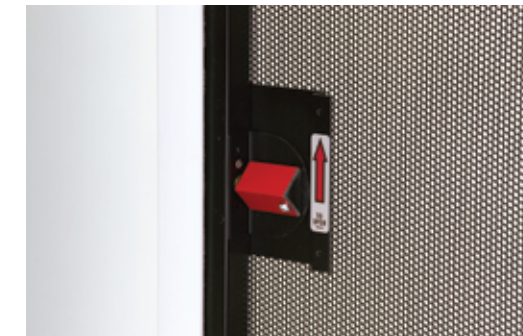
107 BITT KEY LOCK  
& BOLT STATION



DOWN-QUICK  
EMERGENCY RELEASE



ROTO-LIFT QUICK



LIFT QUICK



## Standard Infill Options

12 MESH .028" DIAMETER  
OR 10 MESH .047" DIAMETER  
WIRE CLOTH



51% OPEN AREA OR  
63% OPEN AREA  
PERFORATED PANEL



Having the ability to quickly exit a window from the inside in an emergency situation is just as important as protecting your property against vandalism, forced entry and intruders. For this reason, Kane Security offers multiple emergency egress options (in conjunction with pick-resistant locking mechanisms) that meet all National Fire Protection Association (NFPA) life safety codes.